

# Accolade™ PV

## Veneer Placement System

**Accolade PV** is a complete veneer application system designed by a major lecturer & clinician. Six shades included in the kit satisfy nearly all situations.

Accolade is highly thixotropic so it adapts readily but does not slump. Excellent polish and wear resistance. Now with natural fluorescence and 0.7 micron filler.

**Revolutionary PV Try-In Composites** are ultra slow set composites, eliminating the need for full removal. PV Try-In Composite provides a highly accurate shade. Excess try-in composite is simply brushed off and the matching Accolade PV Composite is directly applied. Conventional water or glycerin based pastes are often not true to color and are a source of contamination and bond failure.

- Revolutionary Try-In Composite
- Developed by leading clinician
- Complete Kit with adhesive, silane & composite

PV Composite Refills		PV Try-In Composite Paste Refills	
Translucent 5gm	90560	Translucent 5gm	91233
Light 3gm	90561	Light 3gm	91234
Extra Light 3gm	90559	Extra Light 3gm	91235
White Opaquer 3gm	90562	White Opaquer 3gm	91236
Brown 3gm	91231	Brown 3gm	91237
Yellow 3gm	91232	Yellow 3gm	91238



Before Veneers



Prep



Try-In



Completed veneers

## Veneer Kit

**Accolade PV Composite:** Translucent 5gms, Light 3gms, Extra Light 3gms, White Opaquer 3gms, Brown 3gms, & Yellow 3gms.

**Accolade Try-in Composites:** Translucent 5gms, Light 3gms, Extra Light 3gms, White Opaquer 3gms, Brown 3gms, & Yellow 3gms.

**Prelude SE bonding system:** Prelude Adhesive.

**SureEtch Gel:** 37% phosphoric etchant.

**S-Bond:** prehydrolyzed silane yields bond strength with superior stability.



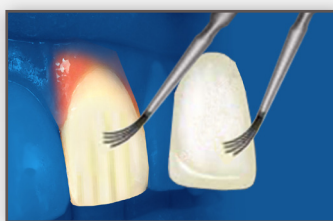
# Accolade™ PV Technique



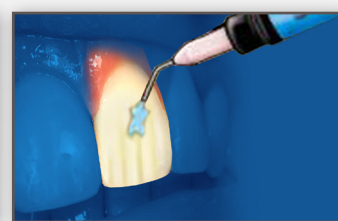
**1** Apply S-Bond Silane to inside of veneer and dry with air stream.



**2** Load veneer with Try-In Composite Paste and press into place. Evaluate color. Caution: Do not use any bonding agents prior to Try-In Composite Paste.



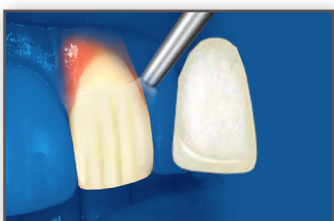
**3** If a shade change is desired, the Try-in Composite paste may be removed with a brush and replaced with another shade. When shade is satisfactory, brush off most of the Try-in Composite Paste.



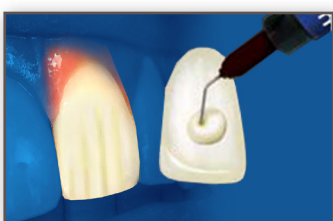
**4** Clean teeth with pumice and water. Dry with air stream. Etch tooth surface for 10 seconds using SureEtch. Rinse well with water.



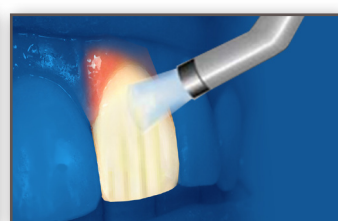
**5** Dab tooth with dry MicroBrush or cotton roll to remove surface wetness. Scrub Prelude Adhesive onto tooth surface then onto veneer surface, for 10 seconds each.



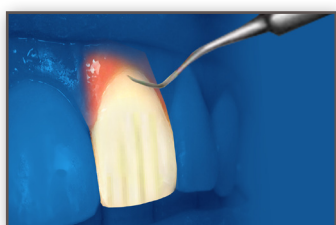
**6** Air thin Adhesive on tooth and veneer. Do not light cure.



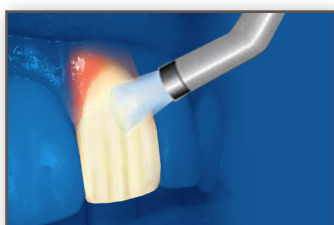
**7** Load veneer with Accolade PV Composite and place on tooth. Residual Try-In Composite Paste will polymerize with the Accolade PV Composite.



**8** Tack veneer center with 5 second light-cure using a small diameter tip. Using a large diameter tip, wave light over margins long enough to gel Accolade PV.



**9** Remove excess Accolade PV gel with explorer. Insert tofflemine strips on both sides of veneer.



**10** Cure all surfaces for 40 seconds and polish margins using a FlashBuster where necessary. Abrasive strips are used on interproximal surfaces.

[www.danvillematerials.com](http://www.danvillematerials.com)

3420 Fostoria Way, Suite A-200 San Ramon, CA 94583 800.827.7940 925.973.0710 Fax 925.973.0764



Innovative Design. Reliable Performance.

92192 Rev B