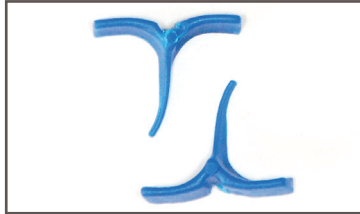


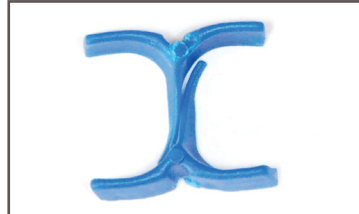
Instructions:

0

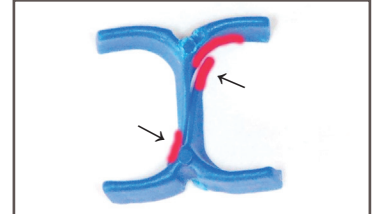
The Concept



1 Note that the apposing sides of the wedge are flat and the side toward band/tooth are biometrically concave



2 The image shows how intimately the wedges "nest" into each other.



3 The arrows show the groove in receiving wedge matches and guides the tip of the counter wedge in red.

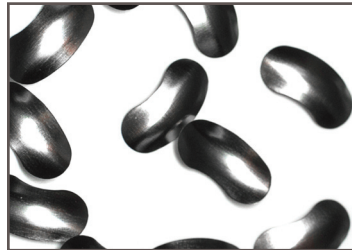
CASE

1

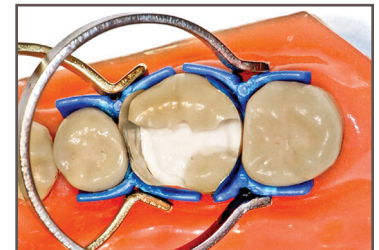
ABC Wedge with sectional matrices



1 ML cusp missing. Distal box within normal limits.



2 Sectional matrices work well for MOL and DO requirements. (Where the matrix is long enough)



3 Both MegaRings provide separation and stability. Gold is preferred in most situations for perfect alignment.

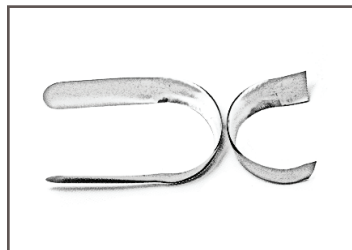
CASE

2

ABC Wedge with Tofflemer



1 Entire lingual aspect is fractured/decayed off. Tofflemer is the only option. A Sectional matrix cannot span this length.



2 A full contour Tofflemer is modified to eliminate buccal overlap.



3 Two gold MegaRings create separation and stability.

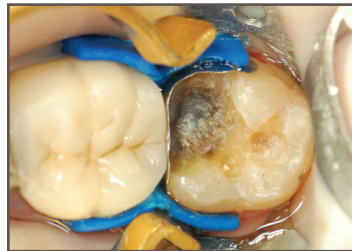
CASE

3

ABC Wedge Clinical Case, DOL Composite



1 Failed Amalgam.



2 ABC Wedge supports the matrix.



3 Final restoration.