

# Contact Matrix™

## Sectional Matrix System

- Restores natural contour
- Ideal contacts
- Minimizes finishing
- Retentive Tines.
- Flat Tines.
- Contoured stainless steel Matrices.
- Occlusal offset.
- Stackable.



Contact Matrix™ is the ultimate matrix system, with three improvements over any other matrix system.

### Contact Rings feature:

1. **Converging tines** to make the rings far more retentive than parallel tines.
2. **Inward and outward tines** for placement on either side of the cavity preparation.
3. **Occlusal offset** to allow stacking and also clearance over obstacles like rubber dam clamps.

Contact Matrix are contoured stainless steel to insure perfect contact and reproduce natural contour. Contact Matrices are provided in small and large sizes as well as soft and stiff thicknesses.

### **MegaRing Trial Kit** 91474

2 Rings (1 inward & 1 outward)  
Lite Flex Matrices 50 Small/50 Large

### **MegaRing Clinical Kit** 91475

6 Rings (3 inward & 3 outward)  
Lite Flex Matrices 100 Small/100 Large

### **MegaRing Clinical Kit Plus** (shown above) 91476

Clinical Kit, Ring Pliers & Matrix Forceps

### **Contact Wedge/Ring Plier** 91298

### **MegaGrip Forceps** 90486

Ring and Matrix refills also available

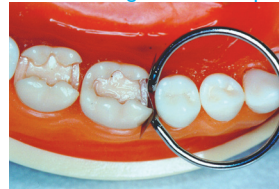
### MOD Prep



Two Rings Stacked



Garrison<sup>1</sup> Ring on Wide Prep



Danville Ring on Wide Prep



<sup>1</sup>Garrison is a trademark of the Garrison Dental Supply Co.

[www.danvillematerials.com](http://www.danvillematerials.com)

3420 Fostoria Way, Suite A-200 San Ramon, CA 94583 800.827.7940 925.973.0710 Fax 925.973.0764



Innovative Design. Reliable Performance

93172 Rev B