

# Prelude

- Use on tooth, composites, and tin plated metals.
- Compatible with all composites and compomers.
- Prelude Primer, Adhesive and Dual/Self-Cure Link are never mixed.
- **Eugenol** will inhibit set. Phosphoric etchant will remove residual eugenol.
- **Avoid saliva and blood contamination.**
- **Shake Adhesive well prior to first use** to redisperse fillers and gently after extended storage.
- **Point nozzle straight down** when dispensing. Release pressure, set upright and cap tightly.
- **Self-cure/dual-cure** composites require Prelude Dual/Self-Cure Link. When Prelude Adhesive and Dual/Self-Cure Link are used with dual/self-cure composites Prelude will polymerize without light making it self-cure.
- **Store <85°F** and out of sunlight. Refrigeration may extend shelf life.
- **Caution:** Unpolymerized monomers may cause skin irritation. Wash thoroughly with soap and water in case of contact.

90987 REV E

WWW.DANVILLEMATERIALS.COM  
 800.827.7940 925.973.0710 FAX 925.973.0764  
 SAN RAMON, CALIFORNIA 94583 USA  
 3420 FOSTORIA WAY SUITE A-200

Danville  
 ENGINEERING & MATERIALS



Ref # 89463 SureEtch Gel 5gm  
 Ref # 90814 MicroPrime Desensitizer 10ml  
 Ref # 90976 Prelude Dual/Self-Cure Link 5ml  
 Ref # 90974 Prelude Adhesive 5ml  
 Ref # 90972 Prelude Primer 5ml  
 Ref # 91024 Prelude Primer/Adhesive 2/pk 5ml ea  
 Ref # 91003 Prelude Sample Kit 1.5ml ea  
 Ref # 90994 Prelude Total-Etch Kit  
 Ref # 90990 Prelude Self-Etch Kit

Reorder Numbers:

# Prelude

ADHESIVE SYSTEM

**Prelude Self-Etch Kit**  
 5ml each Prelude Primer, Adhesive &  
 Dual/Self-Cure Link, 40 Microbrushes &  
 10 Mixing Wells  
**REF # 90990**

**Prelude Total-Etch Kit**  
 5ml each Prelude Adhesive &  
 MicroPrime, 5gm SureEtch,  
 40 Microbrushes & 10 Mixing Wells  
**REF # 90994**



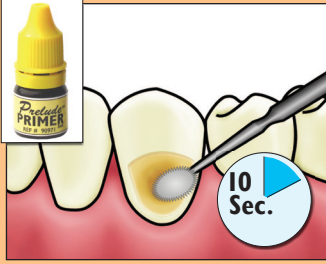
Danville



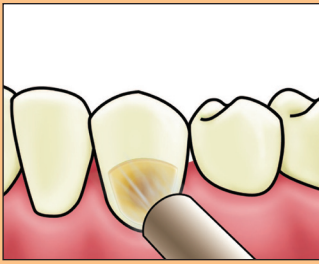
# Prelude INSTRUCTIONS

Prelude is a nanohybrid, light cured, self-etch or total-etch dental adhesive ideal for bonding composite to dentin, enamel, porcelain and tin plated metals. Its low film thickness does not interfere with the fit of indirect restorations.

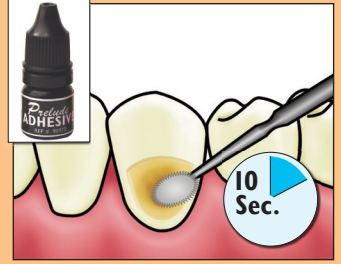
## SELF-ETCH



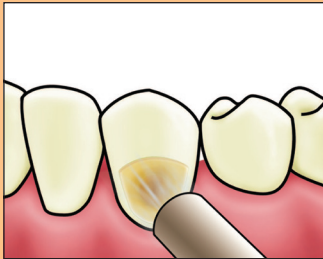
**Apply Primer** to damp or dry enamel & dentin. **Scrub for 10 sec** with a MicroBrush®. Do not rinse.



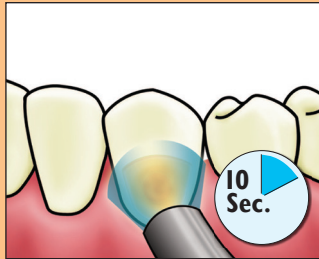
Use an air syringe to gently **evaporate the solvent**. Surface need not remain shiny.



**Apply Adhesive** with a new MicroBrush®. **Scrub for 10 sec**.



**Evaporate solvent** with gentle air stream. Increase air pressure to **thin adhesive**.



**Light cure 10 sec.** Light cure is optional when using Dual/Self-Cure Link with self-cure and dual-cure composites.

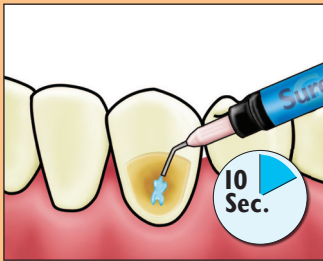
### For direct restorations:

Place 1-2 mm layer of composite (flowable preferred) or compomer restorative and light cure.

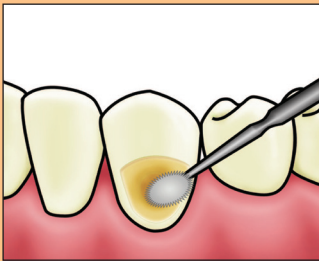
### For indirect restorations:

Prior to Adhesive application, air abrade all indirect restorations bonding surfaces. (TinPlate precious metals and silanate ceramics.) Then follow instructions below for Dual/Self-Cure Link.

## TOTAL-ETCH



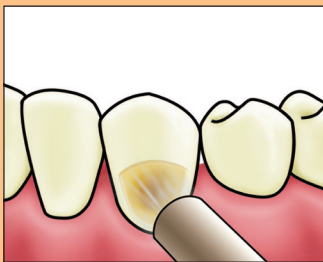
**Etch surface for 10 sec** with SureEtch phosphoric etchant. **Do not scrub. Rinse well.**



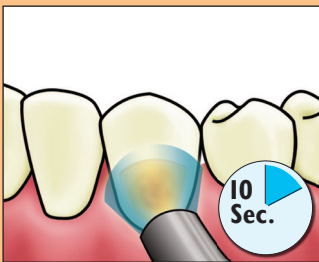
**Do not blow dry. Blot excess water** with a new MicroBrush®, foam pellet or large paper point.



**Apply Adhesive** with a new MicroBrush®. **Scrub for 10 sec.**



**Evaporate solvent** with gentle air stream. Increase air pressure to **thin adhesive**.



**Light cure 10 sec.** Light cure is optional when using Dual/Self-Cure Link with self-cure and dual-cure composites.

### For direct restorations:

Place 1-2 mm layer of composite (flowable preferred) or compomer restorative and light cure.

### For indirect restorations:

Prior to Adhesive application, air abrade all indirect restorations bonding surfaces. (TinPlate precious metals and silanate ceramics.) Then follow instructions below for Dual/Self-Cure Link.

## DUAL/SELF-CURE LINK FOR BONDING SELF-CURE & DUAL-CURE COMPOSITES

For use only when Prelude is used with Self/Dual-Cure Composites.

- Dab Link liberally onto cured or uncured Adhesive with a MicroBrush® for 10 sec.
- Evaporate solvent with air syringe.
- Apply self-cure or dual-cure composite.
- Initiator in self/dual-cured composite will cause Prelude to become dual-cure.

Warning: Dual/Self-Cure Link may shorten the working time of some self-cure and dual-cure composites.

